



## LAr. Dr. Shamsul Abu Bakar

### Qualification:

Registered Professional Landscape Architect with Institute of Landscape Architects Malaysia  
PhD (Architecture and Design Research), Virginia Polytechnic Institute and State University, USA  
Master of Science (Landscape Studies), Universiti Putra Malaysia  
Bachelor of Landscape Architecture, Universiti Putra Malaysia

### Working Experience:

Faculty of Design and Architecture, Universiti Putra Malaysia  
Community Design Assistance Centre (CDAC) Virgin Technology  
SDG Associates, Kuala Lumpur  
Insite Design Kuala Lumpur

### Field of Specialization:

Landscape Architecture & Spatial and Social Behavioural Analysis

### Research Areas of Interest:

Visual Assessment and Management, Memorial Landscape, Landscape Interpretation, Perception and Visualization, GIS, Eye Tracking Analysis



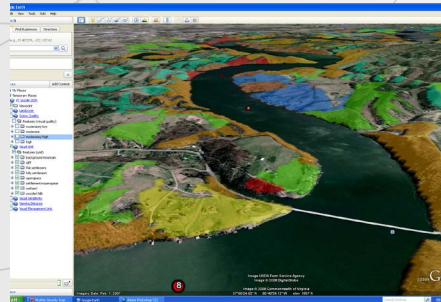
+603 8946 4048 / +6019 297 8981



Department of Landscape Architecture, Faculty of Design and Architecture, UPM



shamsul\_ab@upm.edu.my / shunown@gmail.com



**LAr. Dr. Shamsul Abu Bakar** is currently a Senior Lecturer in the Landscape Architecture Department, Faculty of Design and Architecture, Universiti Putra Malaysia. He received his secondary education at the Royal Military College, Sungai Besi and then attended Engineering Matriculation at Universiti Putra Malaysia in 1996. In 2001 he obtained his Bachelor of Landscape Architecture degree and worked with SDG Associates from 2001-2002 as a Landscape Architect.

Being passionate about teaching, he later joined Universiti Putra Malaysia in 2002 as a tutor and received his Masters degree in Landscape Studies in 2007. In 2013, he received his PhD in Architecture and Design Research from the School of Architecture and Design, Virginia Tech, USA under the scholarship of the Ministry of Higher Education Malaysia. During his study in the US, he was engaged as a research assistant for several private and government funded projects namely Claytor Lake Scenery Management Study (Appalachian Power Company), Cultural Landscape Analysis at Bowman-Hite Farm, Cultural Resource Base and Interpretive Maps for Cedar Creek and Belle Grove National Historical Park, Virginia USA (National Park Service).

Shamsul is also a Corporate Member of Institute Landscape Architect Malaysia (ILAM) and an associate member of the Greenery and Well Being Research Group, Faculty of Design and Architecture, Universiti Putra Malaysia. His research interests include visual assessment and management, memorial landscape, landscape interpretation, landscape perception and visualization, GIS and eye tracking analysis. In 2015, he received the Excellence Research Award from the Institute Landscape Architect Malaysia (ILAM) in recognition of his Eye-Tracking research project. He has been invited as an academic paper reviewer for several international and national conferences.

Besides his academic career, Shamsul was also appointed as a consultant to conduct visual impact assessment study for the government's projects such as Klang Valley Mass Rapid Transit Line 3 Circle Line, Selayang Link and Kuala Lumpur- Singapore High Speed Rail Project. He also serves as a Galeri Serdang Coordinator at FRSSB, UPM.