



## Assoc. Prof. LAr. Dr. Suhardi Maulan

### Qualification:

Registered Professional Landscape Architect with Institute of Landscape Architects Malaysia  
PhD (Environmental Design and Planning), Virginia Polytechnic Institute and State University, USA  
Master of Landscape Architecture, Virginia Polytechnic Institute and State University, USA  
Bachelor of Landscape Architecture, Louisiana State University, USA  
Diploma in Landscape Design, MARA Institute of Technology

### Working Experience:

Faculty of Design and Architecture, University Putra Malaysia  
Insite Design/Arkitek Jururancang Malaysia  
Reich Associates, Baton Rouge, USA

### Field Of Specialization:

Landscape Planning and Design & Landscape and Visual Impact Assessment

### Research Areas of Interest:

Environmental Cognition and Behavior, Green Spaces Evaluation and Assessment & Landscape Architecture Philosophy and History



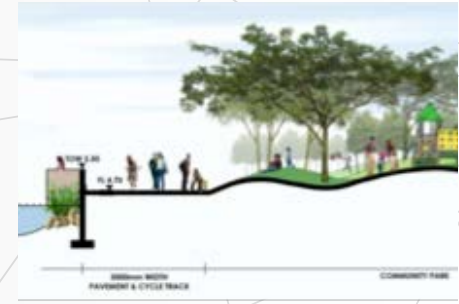
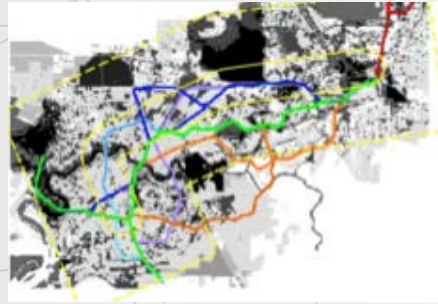
+603 8946 4064 / +6019 641 7384



Department of Landscape Architecture, Faculty of Design and Architecture, UPM



suhardi@upm.edu.my / suhardimaulan@gmail.com



**Assoc. Prof. LAr. Dr. Suhardi Maulan** is an Associate Professor at the Faculty of Design and Architecture, Universiti Putra Malaysia. He teaches courses related to history and theory of landscape architecture, landscape planning, landscape construction and quantitative data analysis. His research interests include people interaction with the built environment, environmental cognition and environmental behavior to support sustainable development. Currently, he focuses on exploring the ambiguity of people preferences and visual parameters for urban scenery and how the preferences relate to brain functions, emotions, behaviors and health. In his research undertaking, Suhardi received grants from several agencies and is leading the Greenery and Well Being Research Group. His research works and findings have been published in conference proceedings and in more than 15 referred journals. Suhardi has supervised 3 MSc. and 3 PhD students and is refereed supervising 3 MSc. and 3 PhD students.

Besides teaching and research activities, Suhardi also involves in consultancy works. Among the projects are Visual Impacts Assessment for MRT-CCL for Klang Valley (2016), Visual Impact Assessment for Light Rail Transit 3 (2014), Visual Impact Assessment for Bus Rapid Transit Line at Bandar Sunway (2012) and Users Willingness to Visit Taman Ular Negeri Perlis in (2012).

In all his research and consultancy works, Suhardi introduces rigorous quantitative data analysis, which is uncommon to design work, to inform design decision and best environmental visual management measures. Suhardi is currently the Editor in Chief for Alam Cipta: International Journal of Sustainable Tropical Design Research and Practice and is also an active member of the Institute of Landscape Architects Malaysia (ILAM) having served ILAM as a Council Member, Honorary Secretary and Vice President.